

Sophos On-access Scanning

Your protection comes from the Sophos on-access scanning. Please keep the on-access scanning enabled. In fact, the only time you should disable on-access scanning is in the rare case when you are asked to disable your antivirus software in order to install some software. Fortunately, software designers and the power of the PC have reduced the once common need to disable anti-virus software during the install of software.

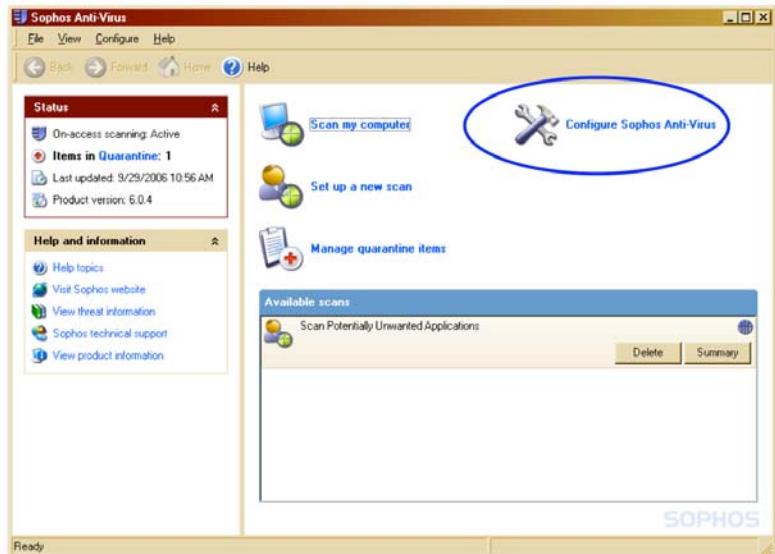
If the shield in your system tray is gray instead of blue, on-access scanning has been disabled.

How to enable and disable on-access scanning.

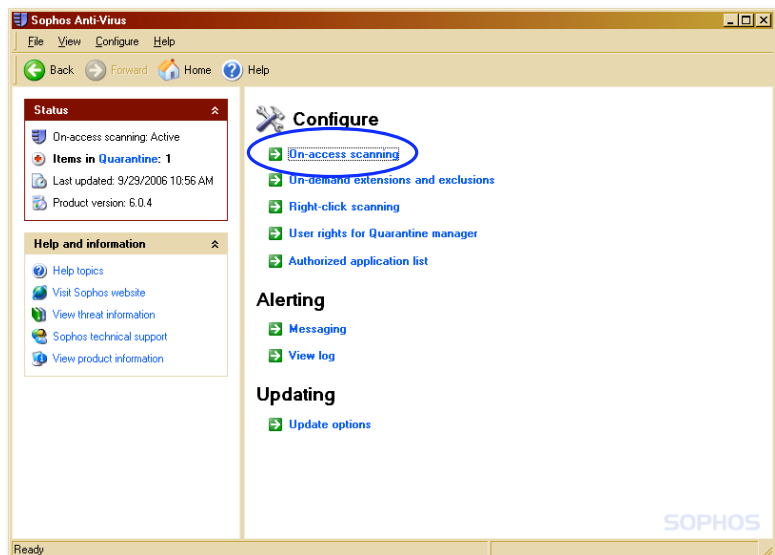
1. Right-click the Sophos shield.
2. Select **Open Sophos Ant-Virus** from the menu.



3. Click **Configure Sophos Anti-Virus**.



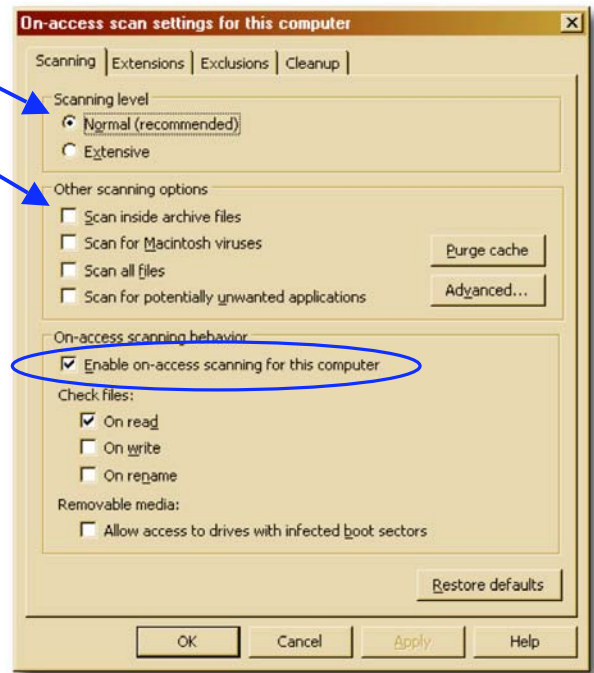
4. Click **On-access scanning**.



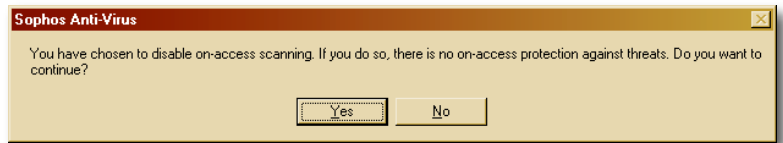
- Note that this computer is set for **Normal scanning** and it's NOT set to **scan inside archive files**. *This is how your computer should be set up.* This provides the best protection without compromising your computer performance.

To disable on-access scanning, simply uncheck the **Enable on-access scanning for this computer** box. Remember to come back and re-enable scanning when you're done doing whatever required that you disable this setting.

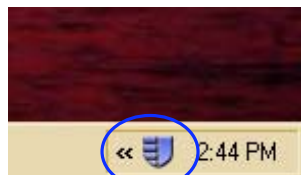
Click OK when you're done.



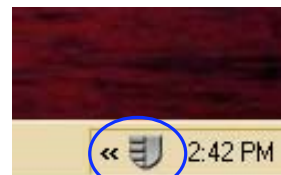
- When you disable on-access scanning, you will get a reminder message.



- You can instantly tell if you have on-access scanning enabled or disabled.



on-access scanning
enabled



on-access scanning
disabled

If you have any questions or problems, contact the Help Desk at (804) 828-2227 or e-mail help@vcu.edu or visit www.ts.vcu.edu/helpdesk. There's also a Sophos FAQ at www.ts.vcu.edu/security/av_faq.html.